



WILKENS-ANDERSON COMPANY

4525 W. Division, Chicago, Illinois 60651

NEW! WACO Accuseam HD Lite 6.2 for Windows 10 & 11

Accuseam HD Lite is based on Accuseam, the most widely used, repeatable and accurate double seam measurement system in the world. Utilizing a new and highly accurate HD camera, coupled with easy to learn and intelligent software – the Accuseam HD Lite system offers an inexpensive solution for double seam measurement.

The double seam inspection software is both quick and powerful, able to automatically capture and analyze the double seam with unprecedented resolution and accuracy. If problems are detected (out of spec measurements), the software alerts the operator and suggests possible solutions.

Cans and ends today are thinner than ever before and the margin for error is razor-thin. This is why a high accuracy, high repeatability, fast and accurate double seam checking system is now needed more than ever. This version of the Accuseam is easy to learn and user-friendly.

The WACO Accuseam HD Lite software is supported under all the latest versions of Microsoft Windows (including Windows 7 and Windows 10). Checking your double seam has never been easier or more affordable.

The WACO Accuseam HD Lite system has the capability to measure 7 seam dimensions:

Seam Thickness measurements can be measured from the seam cross section optically, from an external seam thickness gauge, or via the keyboard.

Countersink depth can be measured from the seam cross section optically, from an external countersink gauge, or via the keyboard.

Seam Height, Overlap, Cover Hook, and Body Hook are all measured automatically from the seam cross section.

Tightness/Wrinkle Rating can be entered via the keyboard.

At the start of a seam check, the operator has the ability to enter various identification characteristics of the cans being tested. Details such as Product, Can Supplier, Can Code, End Supplier, End Code, Videojet Code, Lot #, etc are typically entered.

Measurements Details

Can Spec:

☒ Priority

Can ID	Can Spec
1	202 - 2nd Op.
2	202 - 1st Op.

Production

Line : 1 Date: 04/28/20

No. Of Heads : 12 Time: 09:43:20

No. Of Sections: 3


☐ Recheck Report


☐ Save all images

***** ACCUSEAM 4000 *****

Product		Can Supplier	
Videojet		End Supplier	
Can Code		Technician	
End Code		Comments	

***** Wilkens Anderson *****

 Measure

 Cancel

The operator can also select a set of seam specifications to compare against his measurements. Multiple sets of standards can be entered for flexibility.

Standard List

Can Spec : 202 - 2nd Op. Can ID : 2 Units : Inch ☒ Priority

	Min.	Nom.	Max.
<input checked="" type="checkbox"/> Thickness	0.0420	0.0440	0.0460
<input checked="" type="checkbox"/> Overlap	0.0250	0.0500	0.0750
<input checked="" type="checkbox"/> Body Hook	0.0550	0.0650	0.0750
<input checked="" type="checkbox"/> Cover Hook	0.0530	0.0650	0.0750
<input checked="" type="checkbox"/> Height	0.0950	0.0980	0.1010
<input checked="" type="checkbox"/> Countersink	0.2280	0.2330	0.2380
<input checked="" type="checkbox"/> Tightness:	90	100	100

General | Advanced

Defaults

Line : 1

No. Of Heads : 12

Measur. Per Head : 3

Height & Countersink

None

☐ First Operation

☐ Ignore Countersink

☐ Triple seam / plastic

OK Cancel

If seam thickness and countersink are measured using external gauges, a measurement window will appear.

Thickness

	Head	Section	Value
	1	1	0.0459
	1	2	0.0447
	1	3	0.0441
	2	1	0.0431
	2	2	0.0423
	2	3	0.0440
	3	1	0.0442
	3	2	0.0422
▶	3	3	0.0433

0.04200.04400.0460

Head: 4 / 12Section: 1 / 3

Awaiting gateway input-Thickness

Press foot switch or data hold to continue.

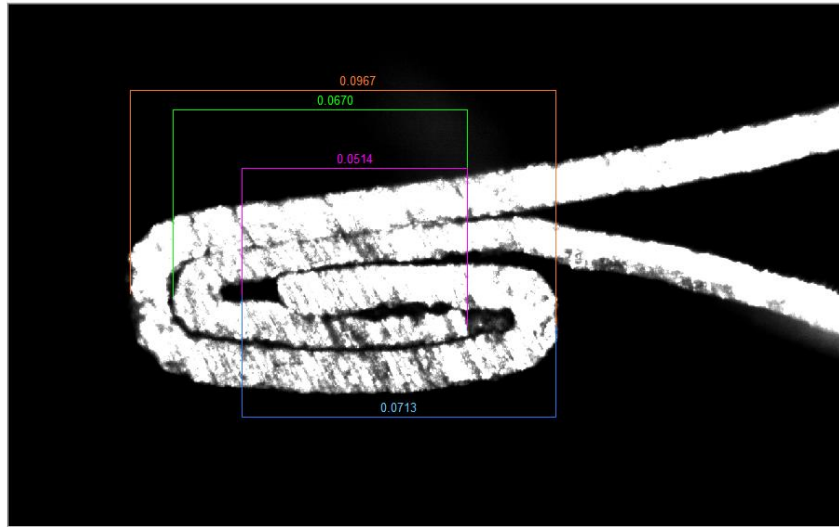
Stop

Ok

Cancel

After seam thickness and countersink measurements are taken, the cans are opened, drained, rinsed, and cross sectioned with the seam saw. The HD optical unit is then used to automatically measure Seam Height, Overlap, Cover Hook, and Body Hook.

0.0967	0.0427	0.2390
Height	Thick	Counter sink
0.0670	0.0514	0.0713
Body Hook	Overlap	Cover Hook



Units :
Inch

Standard:
202 - 2nd Op.

Line:
1

Report:
4

Head:
1/12

Section:
1/3

Continue

Rescan

Save As...

Print

History

Standard

SEAM Doctor

Exit

Images of the can seam can be saved for later review, and all dimensions are saved to the database for organization into reports.

Finally the tightness/wrinkle rating can be entered via the keyboard if desired.

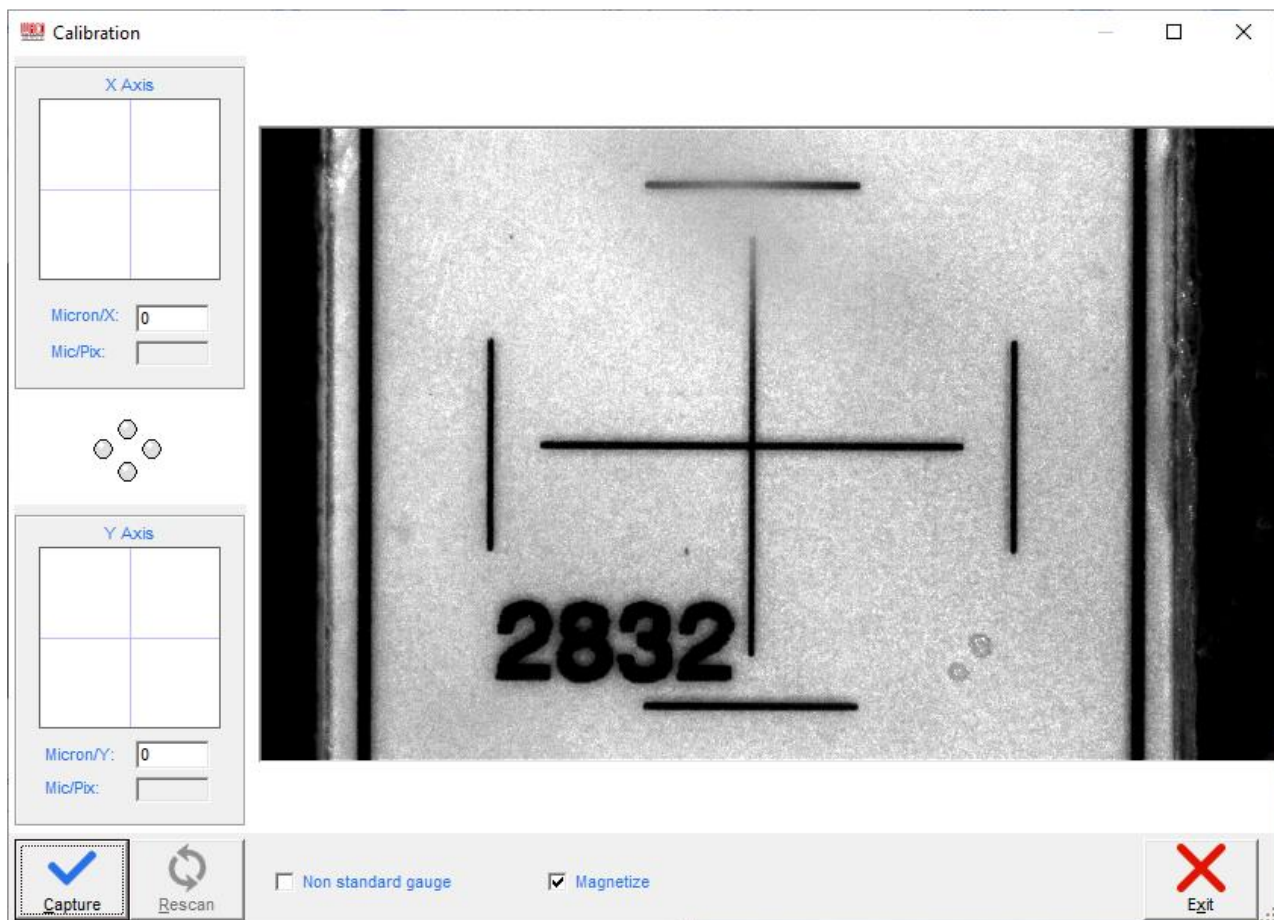
Post Measurements

	Head	Tightness	
	1	100	...
	2	100	...
	3	100	...
	4	100	...
	5	100	...
	6	100	...
	7	100	...
	8	100	...
	9	100	...
	10	100	...
	11	100	...
▶	12	100	...

OK

Cancel

The Accuseam HD Lite is supplied complete with a calibration gauge for calibrating the video image.



WACO

WILKENS-ANDERSON COMPANY

4525 West Division Street, Chicago, Illinois 60651